

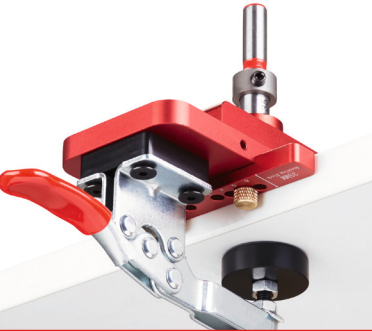
ENGLISH VERSION
INCLUDED (Page 7)



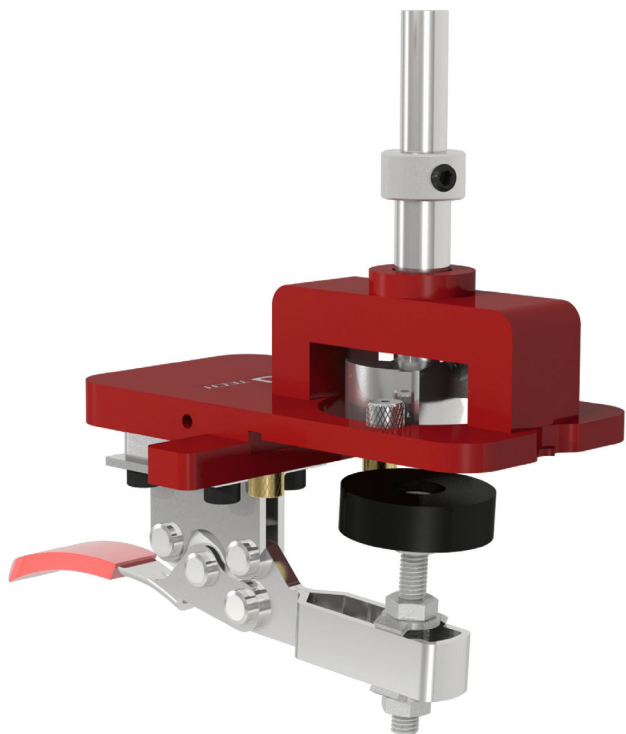
BS-35-T45 / BS-35-T48 / BS-35-T52

— BEDIENUNGSANLEITUNG —

ALU-PRÄZISIONS-BOHRSCHABLONE



ALU-PRÄZISIONS-BOHRSCABLONE



3 MODELL-VARIANTEN

128050 BS-35-T45 für T45/9,5 mm Topfbänder

128051 BS-35-T48 für T48/6,0 mm Topfbänder

128052 BS-35-T-52 für T52/5,5 mm Topfbänder

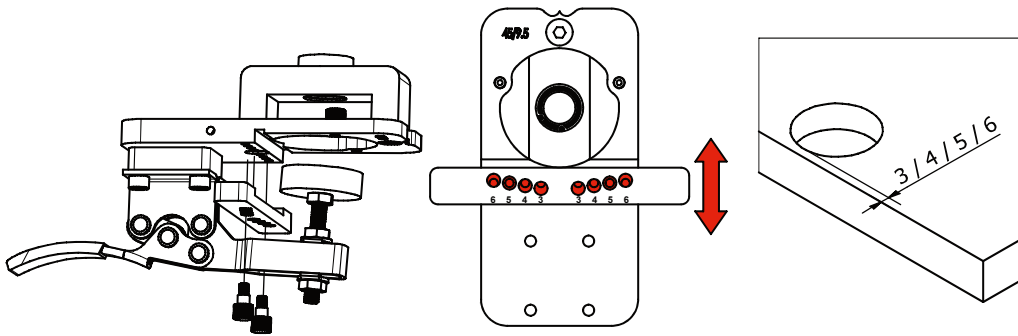
LIEFFERUMFANG

Die wichtigsten Bestandteile:

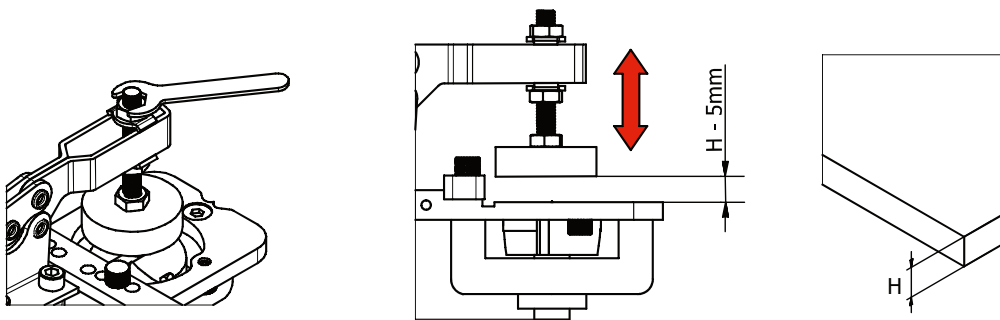
- A. Alu-Präzisions-Bohrschablone mit Kniehebelspanner
- B. Abstandslinial mit Befestigungsschrauben zum Einstellen des Kantenabstands 3/4/5/6 mm
- C. Maulschlüssel SW 10 zum Einstellen des Kniehebelspanners
- D. Hartmetall-Forstnerbohrer Ø 35 mm
- E. Anschlagring mit Sechskantschlüssel zum Einstellen der Bohrtiefe
- F. HSS Bohrer Ø 2,0 x 85 mm zum Vorbohren der Befestigungslöcher



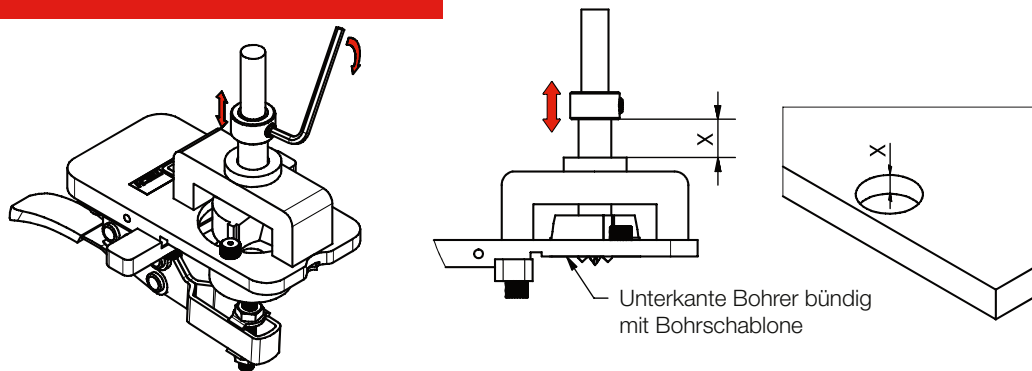
KANTENABSTAND 3, 4, 5 ODER 6 mm EINSTELLEN



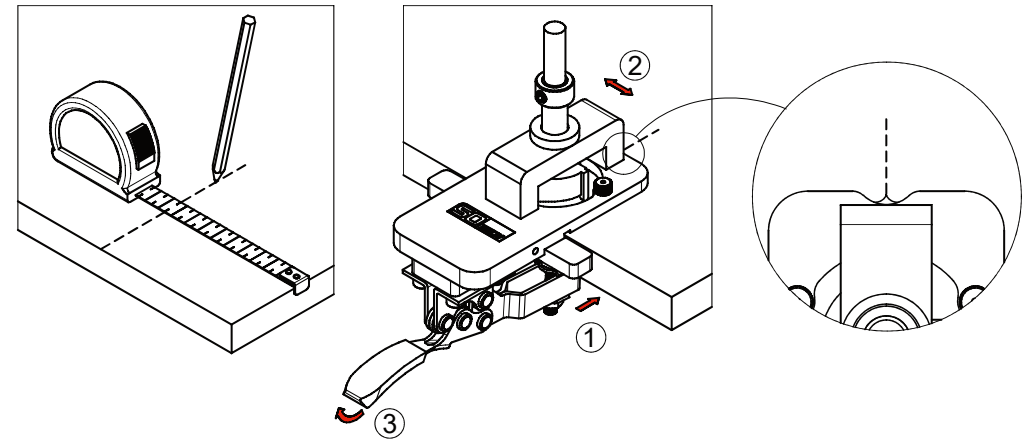
WERKSTÜCKDICKE EINSTELLEN



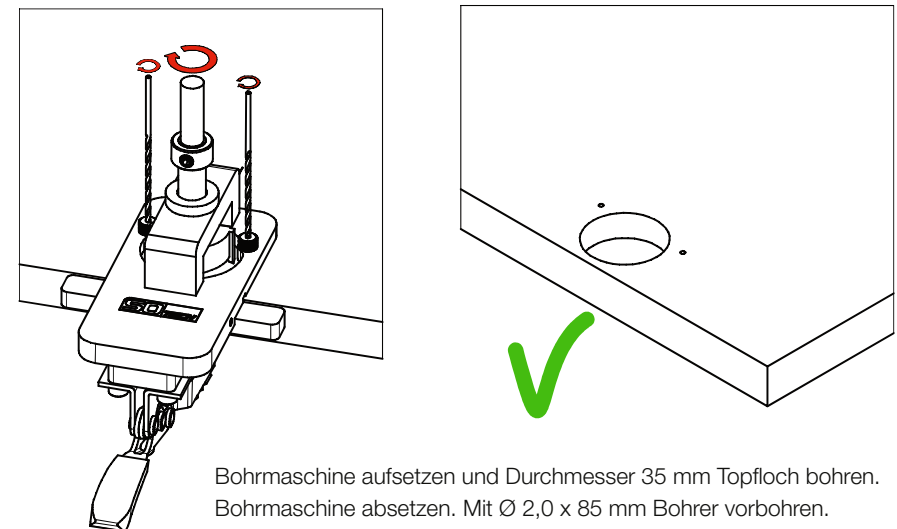
BOHRTIEFE EINSTELLEN



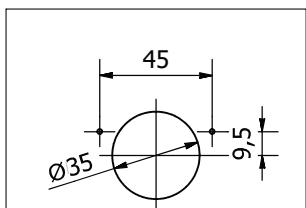
BOHRACHSE ANZEICHNEN & BOHRSCHABLONE AUFSPANNEN



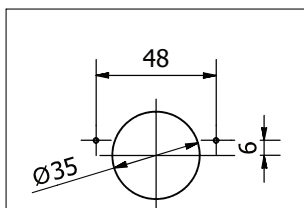
TOPFLOCH BOHREN



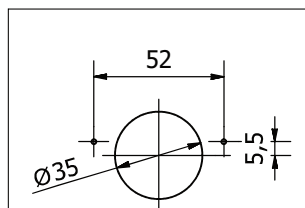
LIEFERBARE BOHRSCHABLONEN



SAP Nr. 128050



SAP Nr. 128051



SAP Nr. 128052

WEITERES ZUBEHÖR (NICHT IM LIEFERUMFANG ENTHALTEN)

Ø 26 mm
Forstner Bohrer



SAP Nr. 129229

Anschlag-Block für
Ø 26 mm Topfloch-
Bohrungen

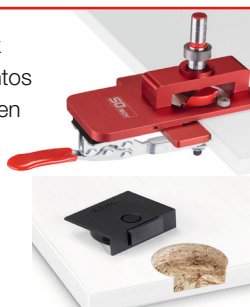


SAP Nr. 130114

Passender 12 mm Block
für Ø 35 mm Blum Aventos
Sensorschalter-Bohrungen



SAP Nr. 129226



FOLGENDE ERSATZTEILE SIND BESTELLBAR BEI SO-TECH

Ø 35 mm
Forstner Bohrer



SAP Nr. 130119

Anschlag-Block für
Ø 35 mm Topfloch-
Bohrungen



SAP Nr. 129227

HSS Bohrer
Ø 2,0 x 85 mm zum
Vorbohren der
Befestigungslöcher



SAP Nr. 130116

Ersatzteilset bestehend
aus Befestigungs-
schrauben, Schlüssel
SW10, Sechskant-
schlüssel SW3, Stell-
ring, Bohrbuchsen



SAP Nr. 129228



www.so-tech.eu

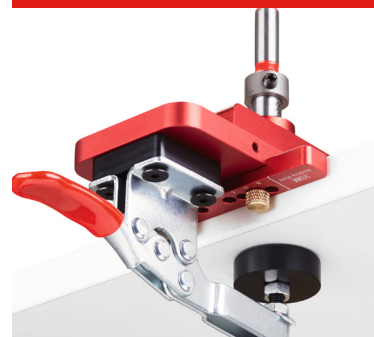


BS-35-T45 / BS-35-T48 / BS-35-T52

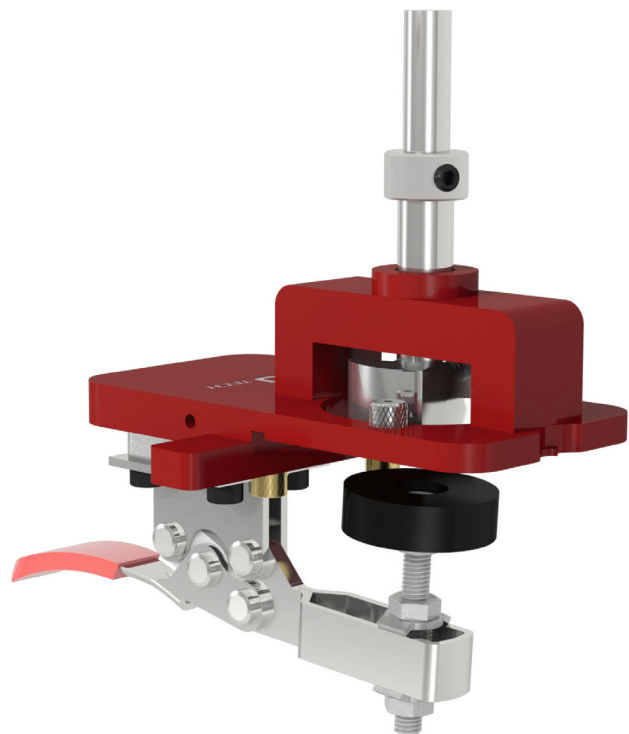
ENGLISH VERSION

— USING INSTRUCTION —

ALU-PRECISION-DRILLING-JIG



ALU-PRECISION-DRILLING-JIG



3 MODEL VARIANTS

128050 BS-35-T45 for T45/9,5 mm hinge

128051 BS-35-T48 for T48/6,0 mm hinge

128052 BS-35-T-52 for T52/5,5 mm hinge

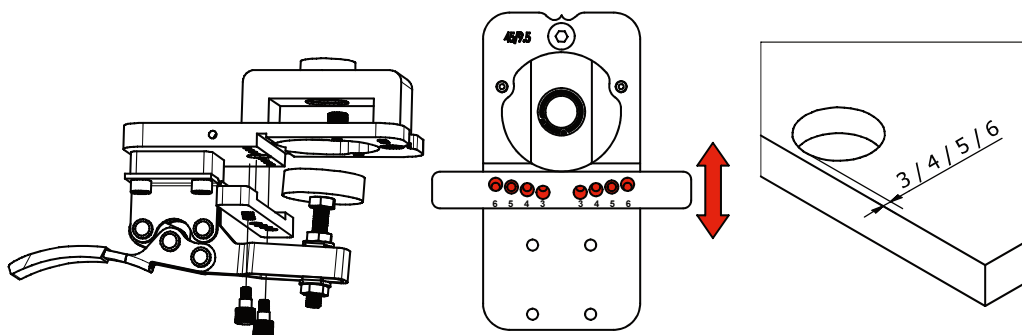
COMPONENTS

The most important components:

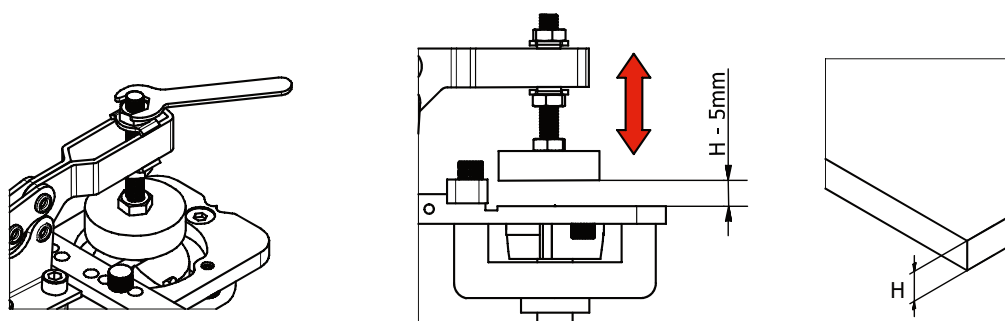
- A. Alu-Precision Jig with toggle clamp
- B. Distance Block with fixing screws to adjust the border distance 3/4/5/6 mm
- C. Spanner SW10 for adjusting the toggle clamp
- D. Carbide Forstner drill bit Ø 35mm
- E. Limit ring with allen-key for adjusting the drilling depth
- F. HSS drill bit Ø 2,0 x 85 mm for pre-drilling of fixing holes



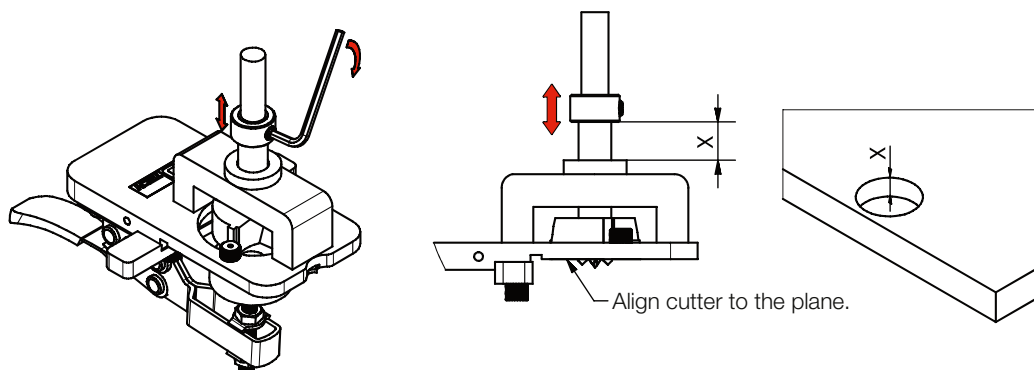
ADJUSTING THE DRILLING DISTANCE FROM THE EDGE



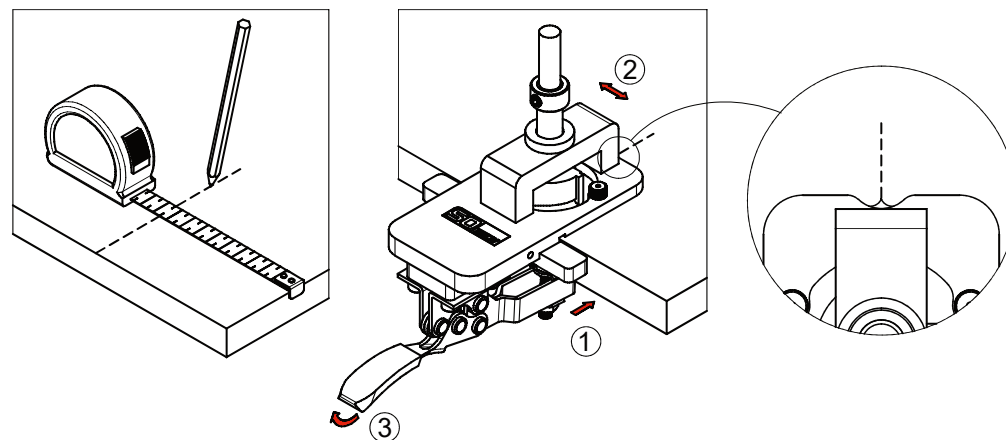
ADJUSTING THE CLAMPING HEIGHT



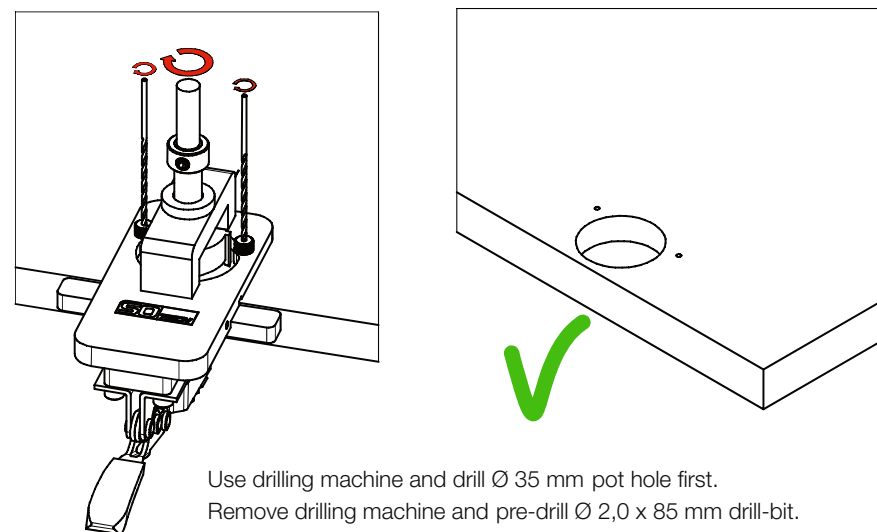
ADJUSTING THE DRILLING DEPTH



DRILLING AXIS SETTING

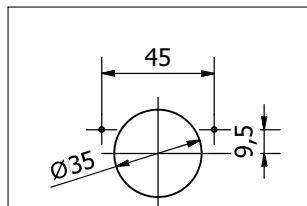


DRILLING THE POT HOLE

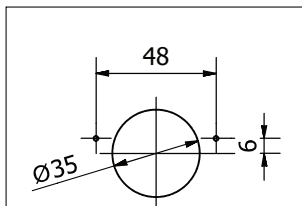


Use drilling machine and drill $\varnothing 35$ mm pot hole first.
Remove drilling machine and pre-drill $\varnothing 2,0 \times 85$ mm drill-bit.

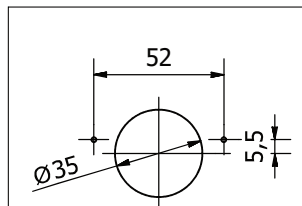
AVAILABLE VERSIONS



SAP Nr. 128050



SAP Nr. 128051



SAP Nr. 128052

AVAILABLE VERSIONS (NOT INCLUDED)

Ø 26 mm
Forstner drill-bit



SAP Nr. 129229

Matching distance
Block for Ø 26 mm
holes

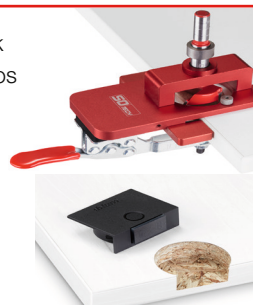


SAP Nr. 130114

Matching distance Block
(12 mm) for Blum Aventos
Sensor switch holes



SAP Nr. 129226



SPARE PARTS CAN BE ORDERED FROM SO-TECH

Ø 35 mm
Forstner drill-bit



SAP Nr. 130119

Matching distance Block
for Ø 35 mm holes



SAP Nr. 129227

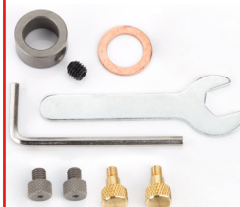
HSS drill bit Ø
2,0 x 85 mm for
pre-drilling of fixing
holes



SAP Nr. 130116

Spare parts set –
included brass nutes,
wrench, inner hexagon
spanner, drill auxiliary
nutes, limit ring

SAP Nr. 129228



www.so-tech.eu